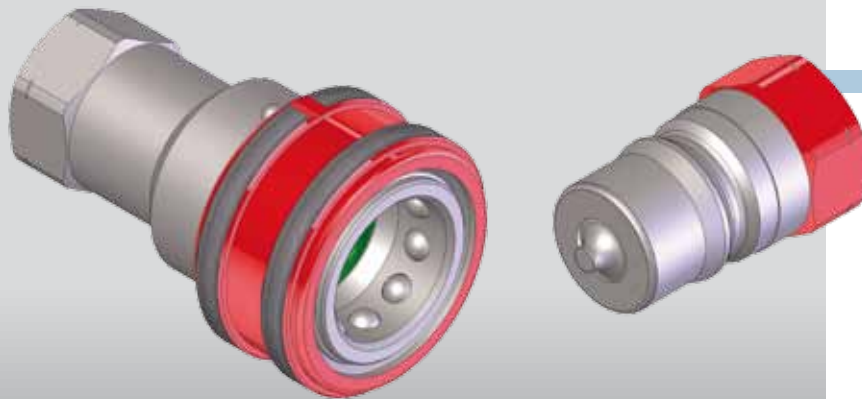


ISO B
ACCIAIO
STEEL
STAHL
ACIER



Caratteristiche tecniche

- Norma: ISO 7241-1 B
- Omologazione: API 16D
- Occlusione: valvola
- Aggancio: sfere radiali
- Materiale: acciaio
- Finitura: Zn-Fe (Cr III)
- Filettature: BSP - NPT
- Temperatura d'esercizio: -25 °C +200 °C
- Pressioni di esercizio: 250 bar
- Connessione in pressione: non consentita

Nominal size				Max working pressure MPa	Rated flow l/min	Max flow rate l/min	Min burst pressure			Fluid spillage cc
DNP	BG	ISO	mm				Male	Female	Coupled	
13	3	12.5	10,5	25	45	90	110	140	110	3,9
20	4	20	15,8	25	106	220	100	130	120	11
25	5	25	17,3	25	189	260	100	110	100	19

1 MPa = 145,04 psi • 1 l = 0,264 gal

Technical data

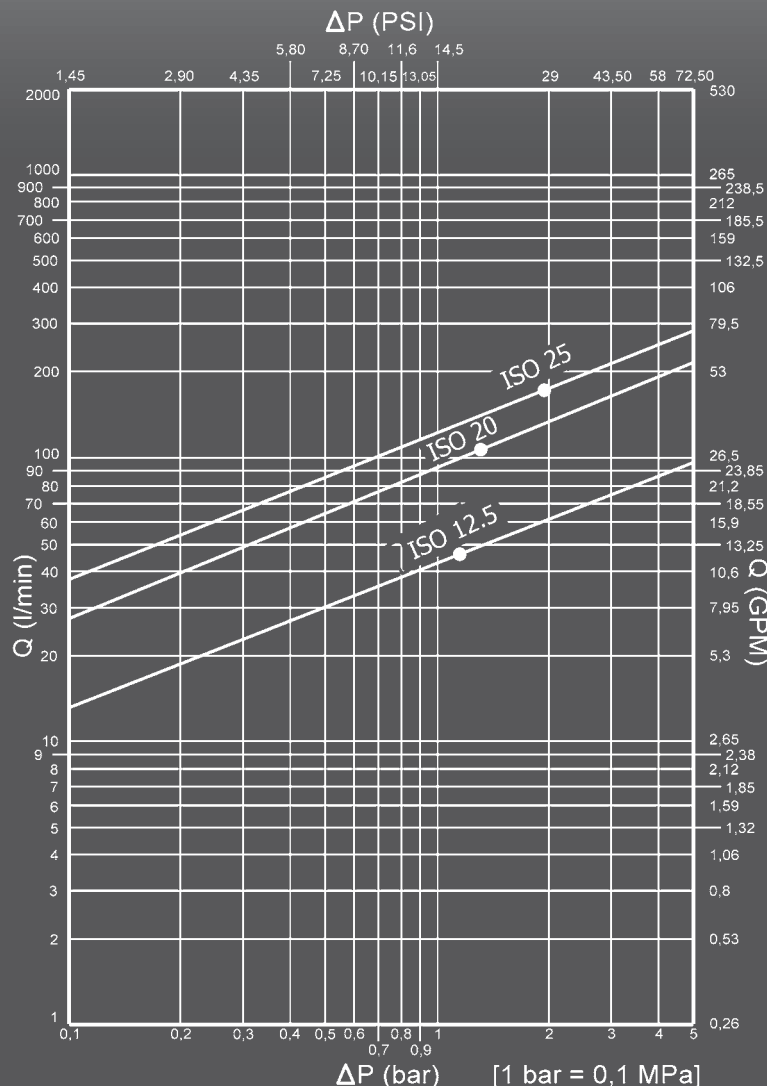
- Standard: ISO 7241-1 B
- Approval: API 16D
- Occlusion: poppet
- Locking: radial balls
- Material: steel
- Finishing: Zn-Fe (Cr III)
- Threads: BSP - NPT
- Working temperature: -25 °C +200 °C
- Working pressure: 250 bar
- Connection under pressure: not allowed

Technische Merkmale

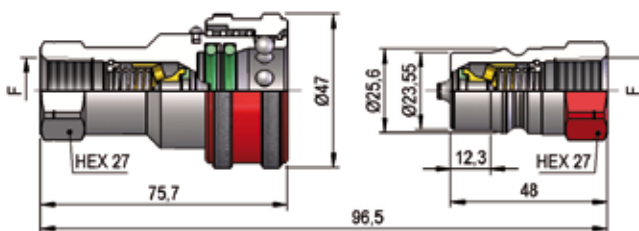
- Norm: ISO 7241-1 B
- Zulassung: API 16D
- Verschluss: ventil
- Kupplung: Radialkugeln
- Werkstoff: Stahl
- Ausführung: Zn-Fe (Cr III)
- Gewinde: BSP - NPT
- Betriebstemperatur: -25 °C +200 °C
- Betriebsdruck: 250 bar
- Kuppeln unter Druck: nicht möglich

Caracteristiques techniques

- Norme: ISO 7241-1 B
- Attestation: API 16D
- Obturation: clapet
- Accrochage: billes radiales
- Matériel: acier
- Traitement: Zn-Fe (Cr III)
- Taraudage: BSP - NPT
- Température de service: -25 °C +200 °C
- Pression de service: 250 bar
- Connexion sous pression: pas possible

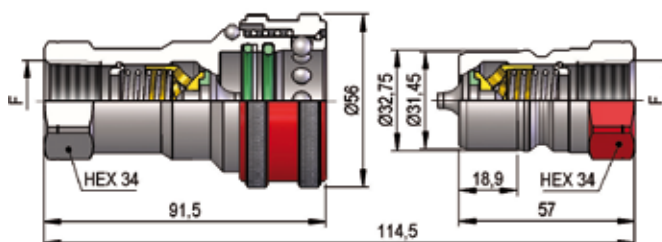


PBV1 BOP DN13 - BG 3 - ISO 12.5



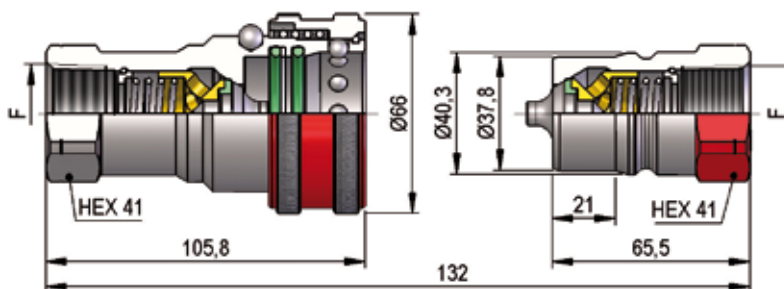
F	STANDARD	FEMMINA - FEMALE - MUFFE - FEMELLE			MASCHIO - MALE - STECKER - MALE		
		COD. F	Weight (g)	Packaging (pcs.)	COD. M	Weight (g)	Packaging (pcs.)
BSP 1/2"	DIN 3852-2-X	PBV4.1313.002 BOP	373	24	PBV1.1313.003 BOP	112	72
NPT 1/2"	ANSI B1.20.3	PBV4.1313.012 BOP	376	24	PBV1.1313.013 BOP	115	72

PBV1 BOP DN20 - BG 4 - ISO 20



F	STANDARD	FEMMINA - FEMALE - MUFFE - FEMELLE			MASCHIO - MALE - STECKER - MALE		
		COD. F	Weight (g)	Packaging (pcs.)	COD. M	Weight (g)	Packaging (pcs.)
BSP 3/4"	DIN 3852-2-X	PBV4.2019.002 BOP	593	12	PBV1.2019.003 BOP	202	72
NPT 3/4"	ANSI B1.20.3	PBV4.2019.012 BOP	596	12	PBV1.2019.013 BOP	207	72

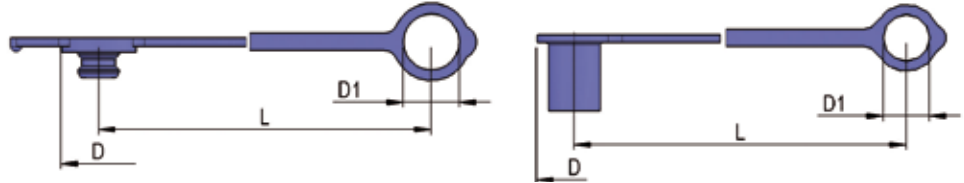
PBV1 BOP DN25 - BG 5 - ISO 25



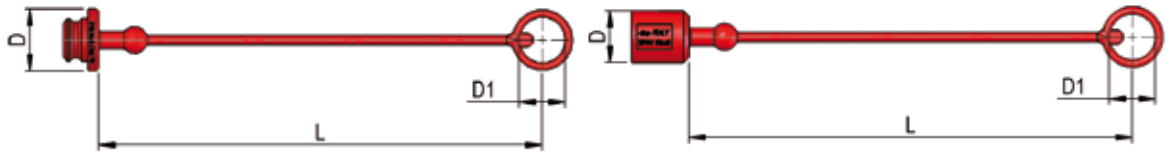
F	STANDARD	FEMMINA - FEMALE - MUFFE - FEMELLE			MASCHIO - MALE - STECKER - MALE		
		COD. F	Weight (g)	Packaging (pcs.)	COD. M	Weight (g)	Packaging (pcs.)
BSP 1"	DIN 3852-2-X	PBV4.2525.002 BOP	990	12	PBV1.2525.003 BOP	355	24
NPT 1"	ANSI B1.20.3	PBV4.2525.012 BOP	1000	12	PBV1.2525.013 BOP	364	24

PLASTIC CAPS

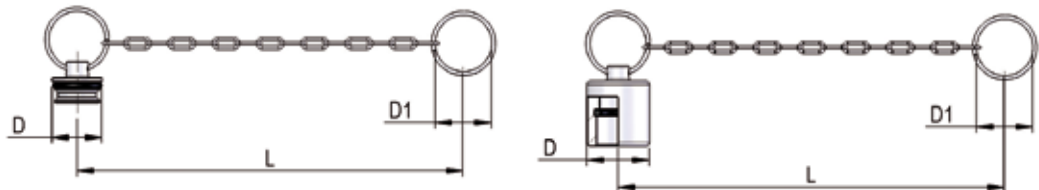
NOMINAL SIZE			FEMALE DUST PLUG					MALE DUST CAP					COLOUR	MATERIAL
DNP	BG	ISO	COD. F	Dimensions			Weight	COD. M	Dimensions			Weight		
				D	L	D1	(g)		D	L	D1	(g)		
13	3	12.5	SPBV.13032	44	175	32	16	SPBV.13033	40	165	24	20		PVC
20	4	20	SPBV.20032	52	190	37	23	SPBV.20033	44	190	31	27		PVC
25	5	25	SPBV.25032	61	230	43	30	SPBV.25033	53	230	37	40		PVC



NOMINAL SIZE			FEMALE DUST PLUG					MALE DUST CAP					COLOUR	MATERIAL
DNP	BG	ISO	COD. F	Dimensions			Weight	COD. M	Dimensions			Weight		
				D	L	D1	(g)		D	L	D1	(g)		
13	3	12.5	SPBV.13002	38	240	29	15	SPBV.13003	29	245	28	13		PVC
20	4	20	SPBV.20002	49	240	38	17	SPBV.20003	36	245	38	16		PVC
25	5	25	SPBV.25002	60	245	46	24	SPBV.25003	44	235	44	19		PVC


METAL CAPS

NOMINAL SIZE			FEMALE DUST PLUG					MALE DUST CAP					MATERIAL
DNP	BG	ISO	COD. F	Dimensions			Weight	COD. M	Dimensions			Weight	
				D	L	D1	(g)		D	L	D1	(g)	
13	3	12.5	SPBV.13202	28	305	41	34	SPBV.13203	35	265	41	66	Aluminum
20	4	20	SPBV.20202	35	265	43	49	SPBV.20203	42	250	30	102	Aluminum
25	5	25	SPBV.25202	44	240	41	70	SPBV.25203	48	340	49	126	Aluminum


SPARE PARTS

NOMINAL SIZE			FEMALE GASKET		FEMALE GASKET	
DNP	BG	ISO	OR-1 (VITON)	OR-2 (VITON)	BK (PTFE)	
13	3	12.5	PBV.013.121 V	PBV.013.121 V	PBV.013.130	
20	4	20	PBV.019.120 V	PBV.019.121 V	PBV.019.130	
25	5	25	PBV.025.120 V	PBV.025.120 V	PBV.025.130	

