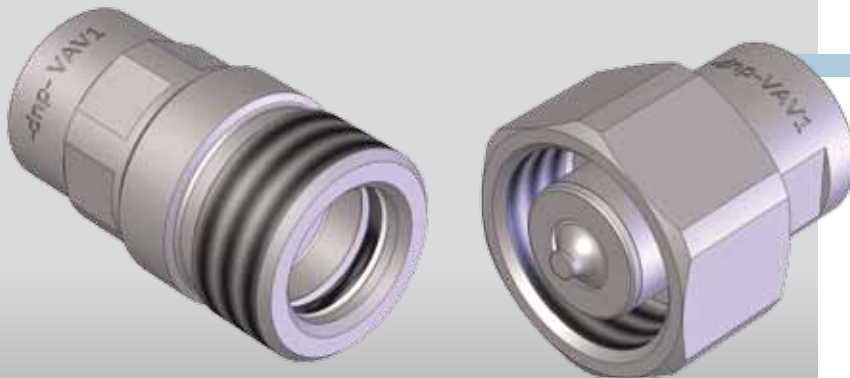


SCREW
VITE ALTA PRESSIONE
HIGH PRESSURE SCREW COUPLINGS
HOCHDRUCKSCHRAUBKUPPLUNGEN
COUPLEURS A VISSEUR HAUTE PRESSION

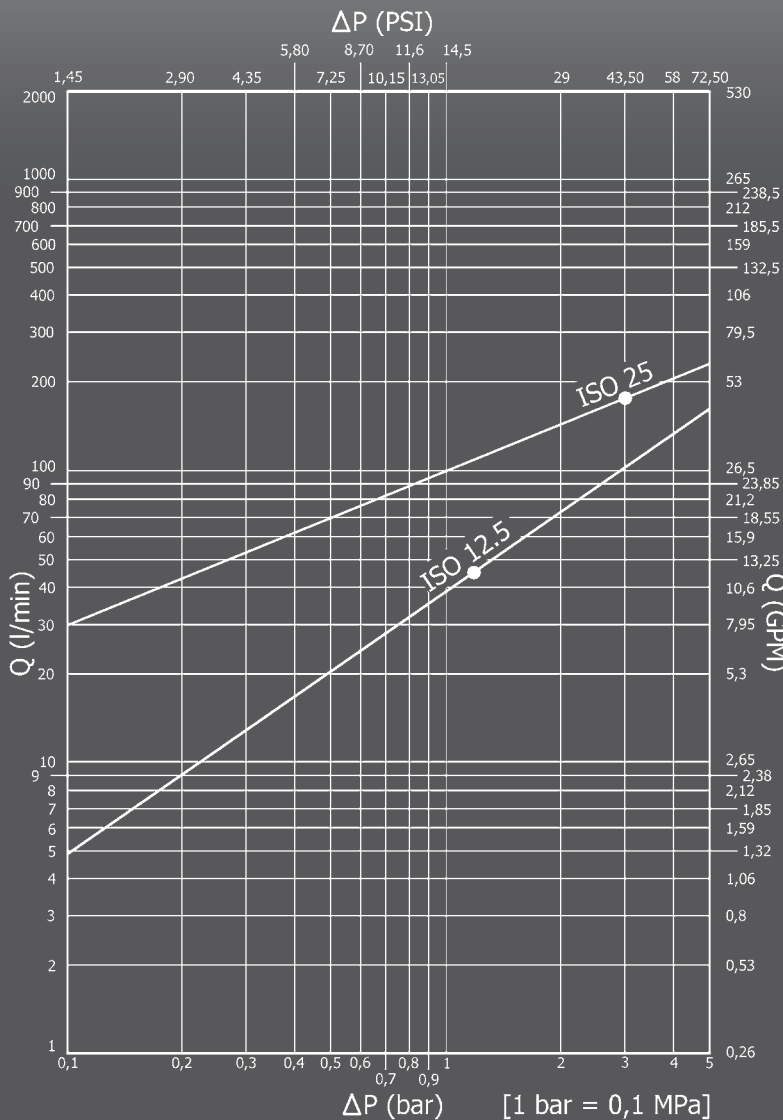


Caratteristiche tecniche

- Intercambiabilità: con i principali produttori
- Occlusione: valvola
- Aggancio: a vite
- Materiale: acciaio
- Finitura: Zn-Fe (Cr III)
- Filettature: BSP - METRICHE
- Guarnizioni standard: NBR
- Temperatura d'esercizio: -25 °C +100 °C
- Guarnizioni opzionali: FKM, EPDM o altro
- Pressioni di esercizio: 375-400 bar
- Connessione in pressione: consentita (lato maschio o lato femmina)
- Massima pressione residua: pressione d'esercizio

Nominal size				Max working pressure	Rated flow	Max flow rate	Min burst pressure			Fluid spillage
DNP	BG	ISO	mm				Male	Female	Coupled	
13	3	12.5	10,5	40	45	90	160	180	170	2,7
25	5	25	17,3	37,5	189	200	160	210	150	16

1 MPa = 145,04 psi • 1 l = 0,264 gal



Technical data

- Interchange: with the main producers
- Occlusion: poppet
- Locking: screw
- Material: steel
- Finishing: Zn-Fe (Cr III)
- Threads: BSP - METRICS
- Standard seals: NBR
- Working temperature: -25 °C +100 °C
- Optional seals: FKM, EPDM or more
- Working pressure: 375-400 bar
- Connection under pressure: allowed (both male or female side)
- Max residual pressure: working pressure

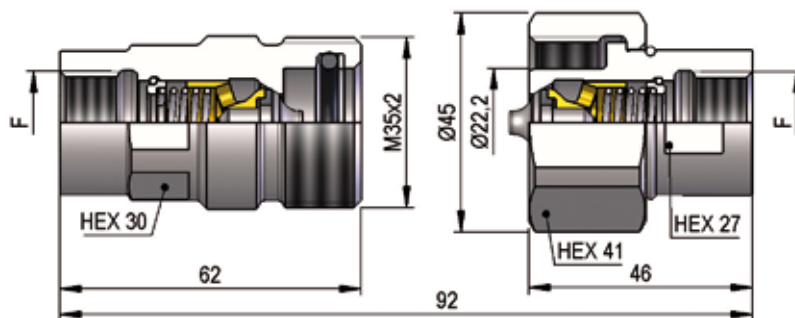
Technische Merkmale

- Austauschbarkeit: mit den wichtigsten Lieferanten
- Verschluss: ventil
- Kupplung: Schraubweise
- Werkstoff: Stahl
- Ausführung: Zn-Fe (Cr III)
- Gewinde: BSP - METRISCHE
- Standard-Dichtungen: NBR
- Betriebstemperatur: -25 °C +100 °C
- Dichtungen nach Wahl: FKM, EPDM, usw.
- Betriebsdruck: 375-400 bar
- Kuppeln unter Druck: erlaubt (Steckerseite oder Muffenseite)
- Max. Restdruck: Betriebsdruck

Caracteristiques techniques

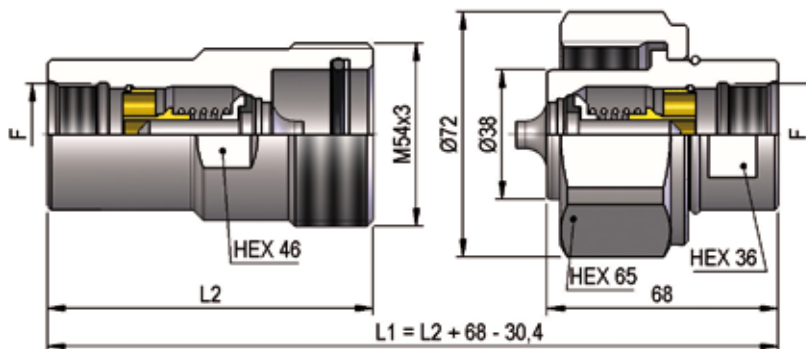
- Intercambiabilité: avec les principaux producteurs
- Obturation: clapet
- Accrochage: a vissé
- Matériel: acier
- Traitement: Zn-Fe (Cr III)
- Taraudage: BSP - METRIQUES
- Joints standard: NBR
- Température de service: -25 °C +100 °C
- Joints facultatifs: FKM, EPDM, ect.
- Pression de service: 375-400 bar
- Connexion sous pression: possible (côté male ou femelle)
- Pression restante max: pression de service

VAV1 DN13 - BG 3 - ISO 12.5



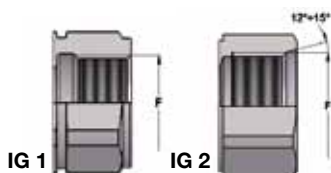
THREADS	F	STANDARD	FEMMINA - FEMALE - MUFFE - FEMELLE			MASCHIO - MALE - STECKER - MALE		
			COD. F	Weight (g)	Packaging (pcs.)	COD. M	Weight (g)	Packaging (pcs.)
IG 1	BSP 1/2"	DIN 3852-2-X	VAV1.1313.002	268	60	VAV1.1313.003	235	60
IG 2	M22x1,5	SAE J 2244/1	VAV1.1322.102	262	60	VAV1.1322.103	229	60

VAV1 DN25 - BG 5 - ISO 25



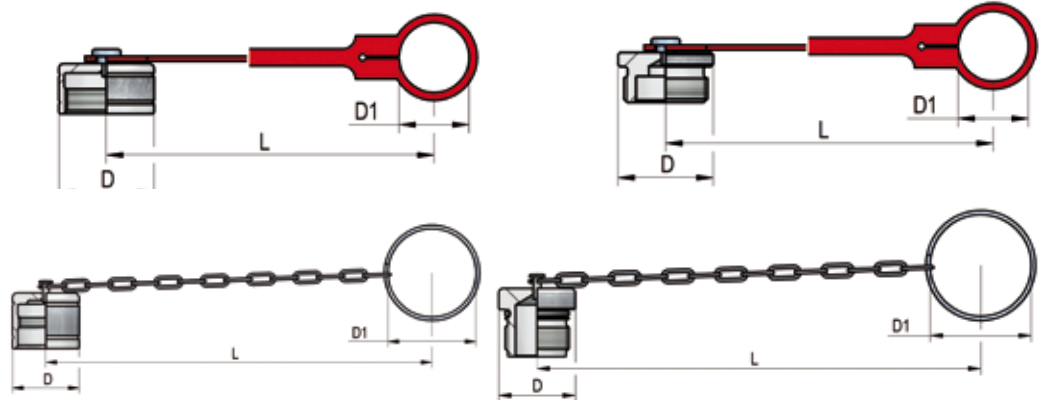
THREADS	L2	F	STANDARD	FEMMINA - FEMALE - MUFFE - FEMELLE			MASCHIO - MALE - STECKER - MALE		
				COD. F	Weight (g)	Packaging (pcs.)	COD. M	Weight (g)	Packaging (pcs.)
IG 1	97,8	BSP 1"	DIN 3852-2-X	VAV1.2525.002	803	20	VAV1.2525.003	872	12
IG 2	95,8	M30x1,5	SAE J 2244/1	VAV1.2530.102	827	20	VAV1.2530.103	896	12

THREADS



METAL CAPS

NOMINAL SIZE			FEMALE DUST PLUG				MALE DUST CAP				MATERIAL		
DNP	BG	ISO	COD. F	Dimensions			Weight (g)	COD. M	Dimensions			Weight (g)	
				D	L	D1			D	L	D1		
13	3	12.5	SVAV.13202	40	135	29,5	35	SVAV.13203	40	135	29,5	47	Aluminum with plastic tongue
25	5	25	SVAV.25202	60	275	47,5	80	SVAV.25203	60	275	47,5	194	Aluminum with chain


SPARE PARTS


NOMINAL SIZE			FEMALE GASKET	
DNP	BG	ISO	OR (NBR*)	BK (PTFE)
13	3	12.5	VAV.013.120	VAV.013.130
25	5	25	PBV.025.120	VAV.025.130

* AL CODICE DELLA GUARNIZIONE IN NBR AGGIUNGERE 'E' PER EPDM O 'V' PER VITON

TO THE NBR GASKET CODE ADD 'E' FOR EPDM OR 'V' FOR VITON

ZU DER ARTIKELNR. DER NBR DICHTUNG GEBEN SIE 'E' FUER EPDM ODER 'V' FUER VITON AN

AU CODE DU JOINT EN NBR JOINDRE 'E' POUR EPDM OU 'V' POUR VITON